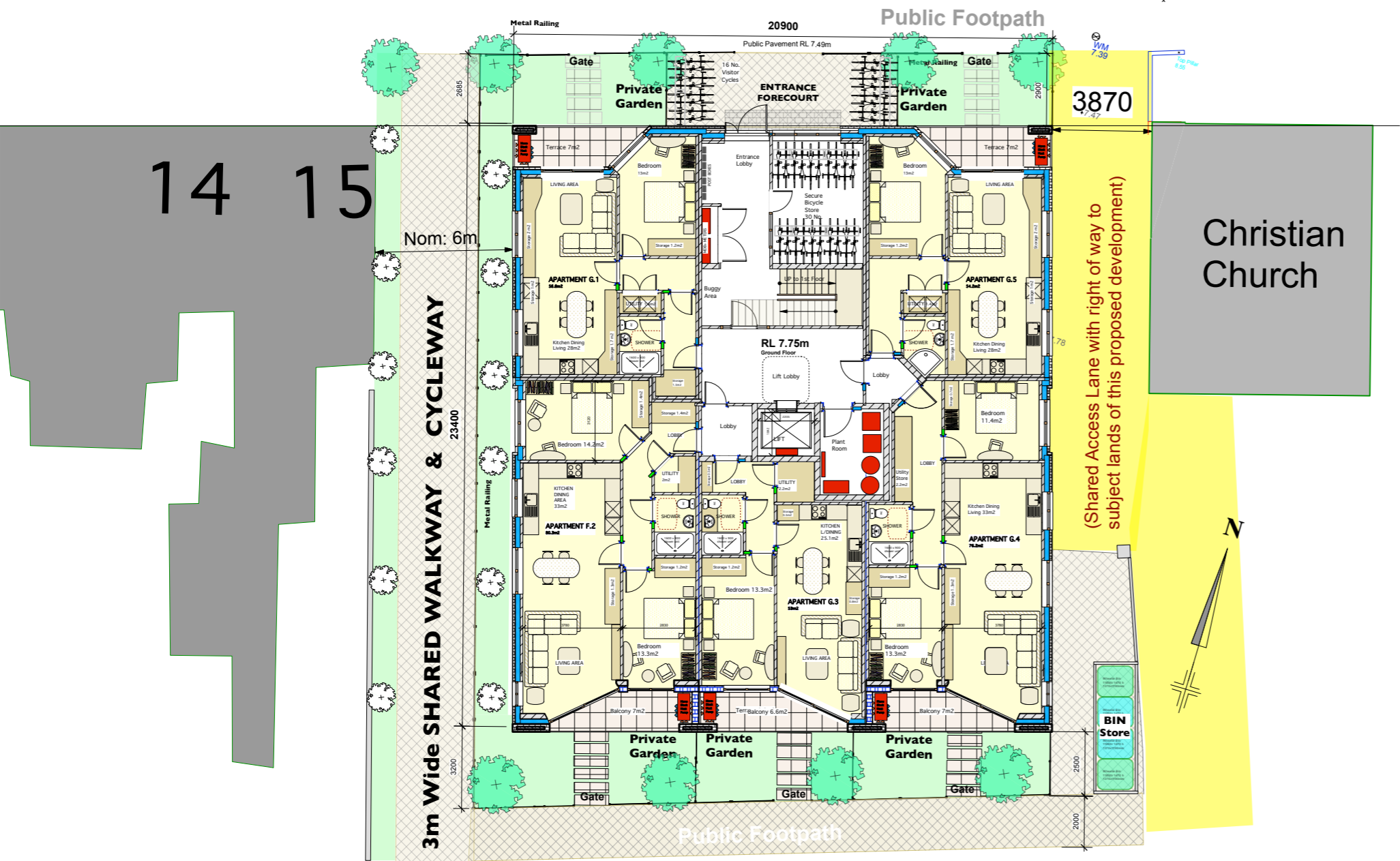
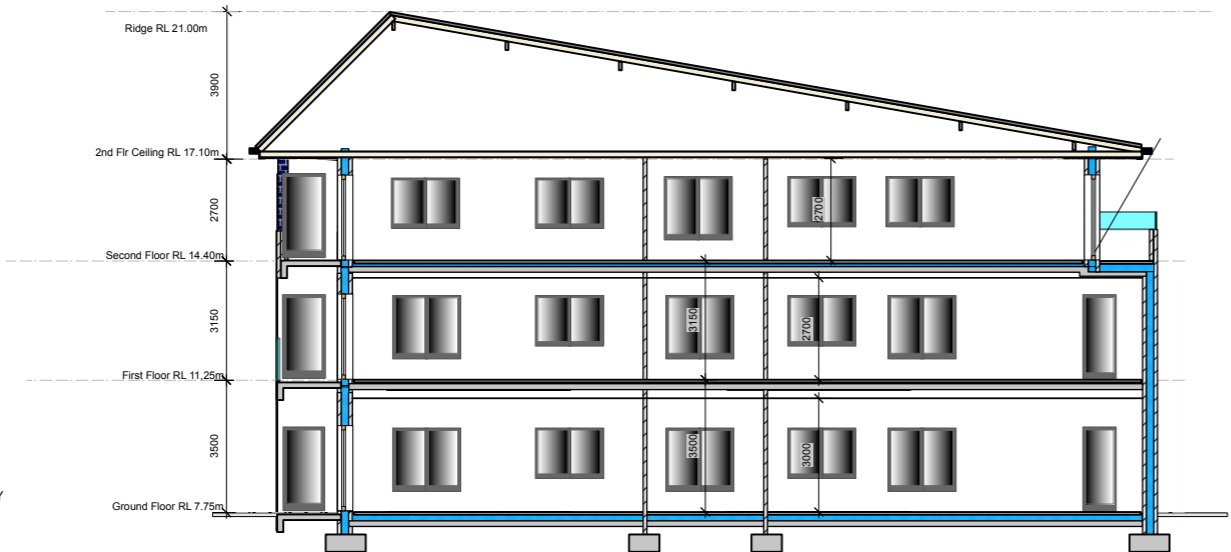


# Clonmore Apartments "A"

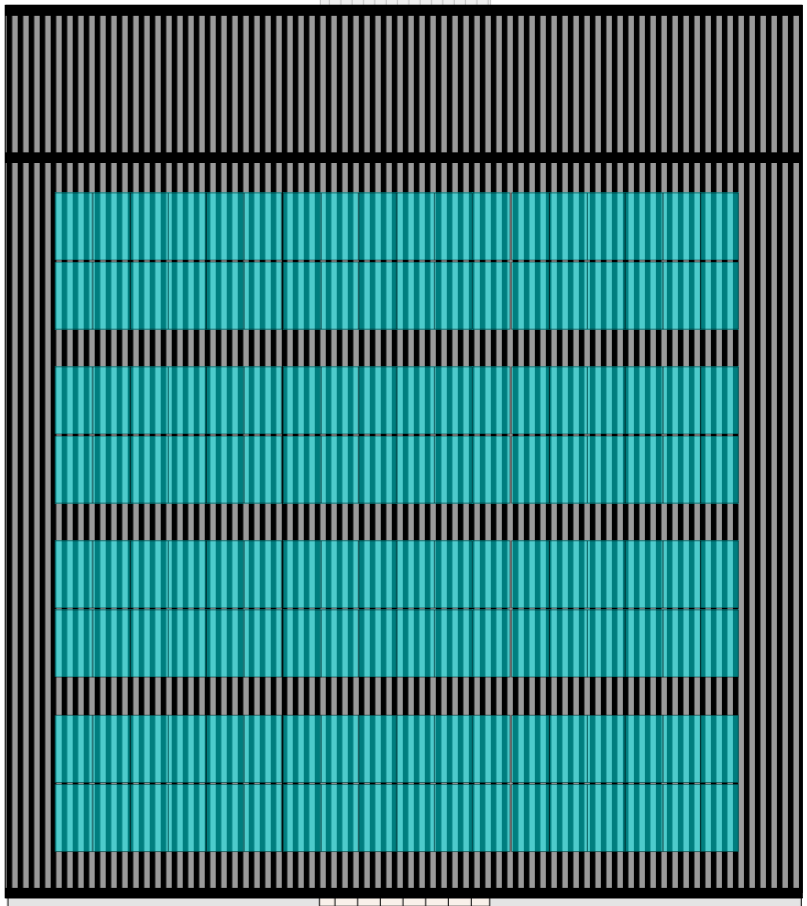
Old N21 Main Tralee Road



Ground Floor Plan  
Scale 1:100 424 m2



Section AA Scale 1:100



Roof Plan  
Scale 1:100 144 x 0.4kW PV Panel 57.6kW Solar Roof

## Apartment Block 'A' Schedule:

Apartment G1: 56.8m2 +26% One Bedroom 2 Person  
Apartment G2: 80.3m2 +10% Two Bedroom 4 Person  
Apartment G3: 53.0m2 +18% One Bedroom 2 Person  
Apartment G4: 76.2m2 +4.4% Two Bedroom 4 Person  
Apartment G5: 54.2m2 +20% One Bedroom 2 Person

Apartment F1: 73.0m2 +0% Two Bedroom 4 Person  
Apartment F2: 80.3m2 +10% Two Bedroom 4 Person  
Apartment F3: 56.0m2 +24% One Bedroom 2 Person  
Apartment F4: 80.3m2 +10% Two Bedroom 4 Person  
Apartment F5: 73.0m2 +0% Two Bedroom 4 Person

Apartment S1: 73.0m2 +0% Two Bedroom 4 Person  
Apartment S2: 77.2m2 +6% Two Bedroom 4 Person  
Apartment S3: 53.5m2 +19% One Bedroom 2 Person  
Apartment S4: 77.2m2 +6% Two Bedroom 4 Person  
Apartment S5: 73.0m2 +0% Two Bedroom 4 Person

**15 Apartments: Max 52 Residents**  
**5 x 1 Bedroom + 10 x 2 Bedroom Apartments**

Ground Floor Plan 424 m2  
First Floor Plan 424m2  
Second Floor Plan 415m2  
Total Floor Area 1263 m2

john phelan | architects

26 Castle Countess, Tralee, Co.Kerry t: 066-7118079  
m: 0872427859 e: johnphelanarchitect@gmail.com

Planning  
Issue Only



2301 PA 10

Clonmore Apartments "A"  
Apartment Block "A" Plans & Section

Scale 1:100 @ A1 1:200 @ A3  
10th August 2023



© The Copyright of this drawing & design  
is vested solely in the Architect.  
This drawing is for PLANNING PURPOSES ONLY  
and may not be used for any other purpose.

0 5 10 M